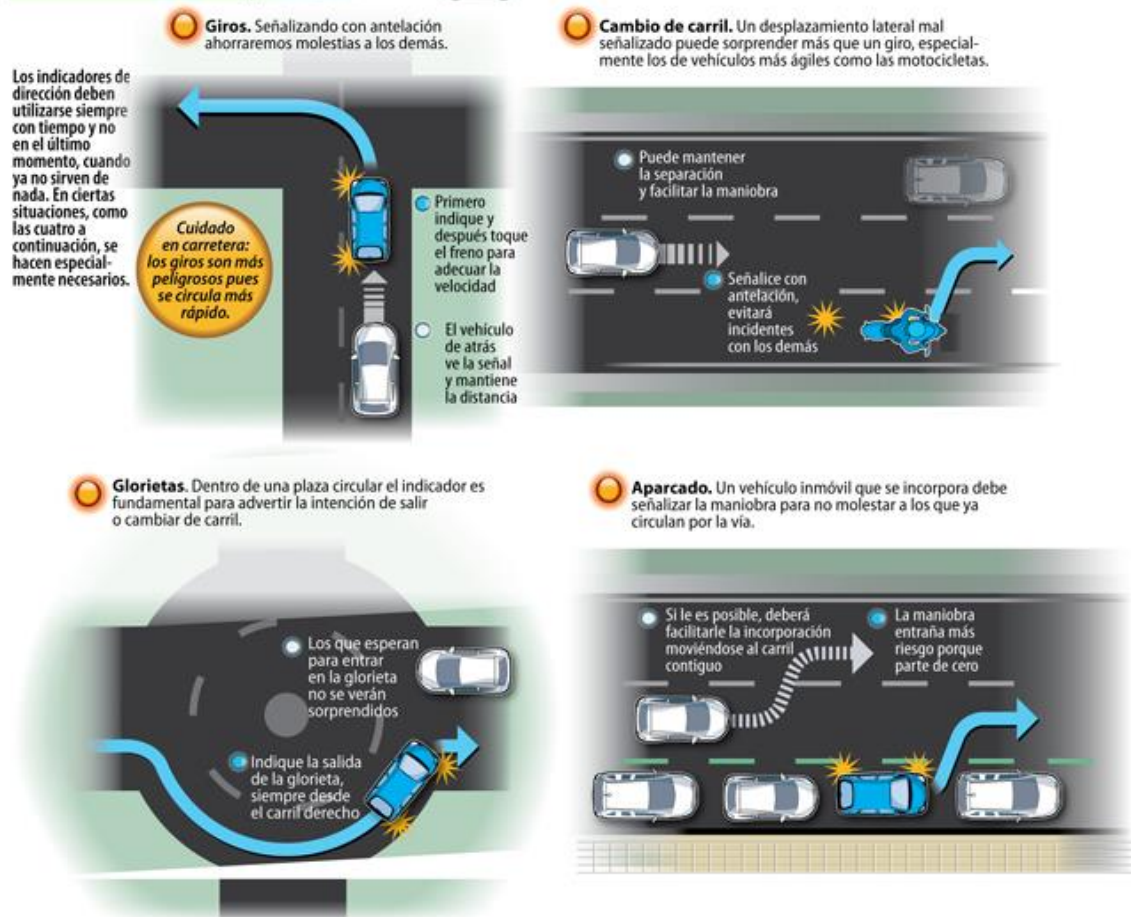


Four situations where you should use your indicators

Cuatro situaciones para señalar



Top left Turning: indicate first, then apply brakes.

Top right Changing lane: beware of smaller vehicles or motor bikes which can change more quickly.

Bottom left Roundabout: always be in the right-hand lane when signalling to exit.

Bottom right Parking: a stationary car must always indicate its intention to move out, to warn other vehicles.

See also [sorry, don't have time to translate this right now!]

<http://asp-es.secure-zone.net/v2/index.jsp...>